

Centerm Site Services Facility

Centerm Container Terminal, Vancouver, British Columbia

Centerm's new RTG cranes call for a tall servicing facility

owner... *P&O Ports*

client... *GTS*

duration... *4 months*

completed... *March 2007*

The 107ft columns of this crane servicing bay took extra care in planning to ensure a successful project. KWH was subcontracted by George Third & Son to erect all the structural steel for the servicing bays and office levels of this structure

Proper erection sequencing allowed higher performance of available shoring and crane operations in this busy and restricted port

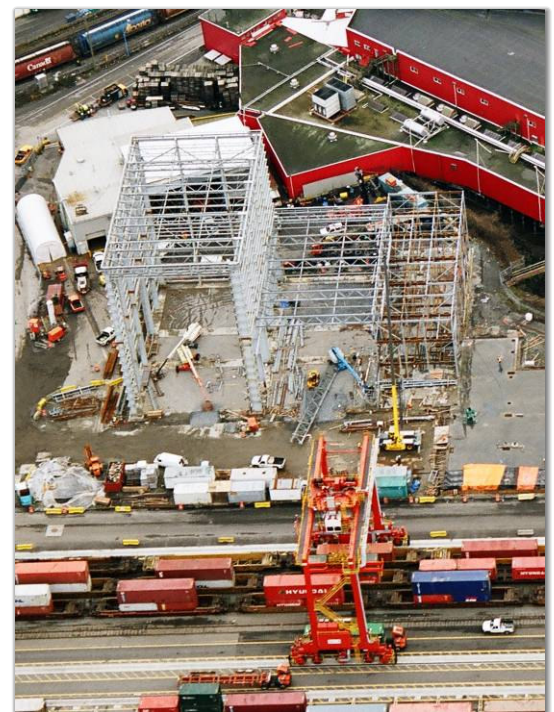
Other critical obstacles that were overcome were the instability of the 60ft roof trusses and low tolerances of the overhead crane rails and 100ft main door frame



the servicing facility includes a 100 ft tall bay for servicing Centerm's new Rubber Tire Gantries (RTG's)



erecting 107 ft columns



aerial view shows size of servicing bay for the red RTG

